

SERVICE BULLETIN

SUBJECT: COMMUNICATIONS – ACARS & CPDLC – Install or Upgrade TSAP database

1. PLANNING INFORMATION

A. Effectivity

This change applies to the Dlink+ w/CPDLC units shown below.

Part Number	Mod Level	Serial Numbers
14114-1-01	ALL	ALL
14114-1-02	ALL	ALL
14114-1-05	ALL	ALL

B. Concurrent Requirements

None.

C. Reasons

(1) The condition the Service Bulletin will correct or improve:

The TSAP database provides addresses for the System Access Points of the CPDLC communication network for Link 2000+ program in European Airspace. Installation of this update database corrects/updates several addresses for the Skyguide airspace.

Service or industry experience:

Database updates were tested at Spectralux test lab.

(2) Consequences if the modification is not performed:

Communication with facilities LSAG (Geneva) or LSAZ (Zurich) will require a transfer from a previous facility that the aircraft is in communication with or an initial Contact Request would need to be sent from the LSAZ or LSAG facility to the aircraft.

(3) Expected benefits:

Having these addresses preloaded reduces pilot workload.

D. Description

The database is installed by connecting a laptop containing the PC loader application and database to the maintenance port of the Dlink+ w/CPDLC.

E. Compliance

This service bulletin is recommended and should be performed as soon as practical.

F. Approval

Not applicable.

SERVICE BULLETIN

G. Manpower

The table below shows an estimate of the task duration necessary to make this change for each unit. This estimate is for direct labor only, done by an experienced technician. PC configuration is not included.

Task	Duration
Attach the Ethernet cable between the PC and Dlink+ w/CPDLC	<1 minute
Boot Dlink+ w/CPDLC	<1 minute
Follow the instructions in section 3	<1 minute
TOTAL FOR EACH UNIT	<3 minutes

H. Weight and Balance

None.

I. Electrical Load Data

Not changed.

J. References

INST-14114-1 Revision A .

K. Other Publications Affected

None.

L. Interchangeability or Intermixability of Parts

Not applicable.

2. MATERIAL INFORMATION

A. Material – Price and Availability

No material purchases are necessary.

B. Industry Support Information

This Service bulletin supersedes SB - 14114-23-02

This database update is supplied at no charge to the customer.

C. Material Necessary for Each Component

None.

D. Material Necessary for Each Spare

None.

SERVICE BULLETIN

E. Re-identified Parts / Existing Parts Accountability

NONE. Installation of this database is not part of the certified software build. It is an optional data-source provided for the convenience of the customer.

F. Special Tooling and Software Necessary to do this Service Bulletin

Note: Equivalent alternatives may be used.

Note: One copy of each item is needed.

(1) Supplied by Spectralux

Part No.	Description	Source
SB - 14114-23-04 Revision -.zip	Programming and database	Spectralux

(2) Expected shop equipment

Part No.	Description	Source
Industry Standard	Laptop PC running Windows 7 or Windows XP, with Ethernet cable.	Commercial Standard

3. PC CONFIGURATION INSTRUCTIONS (ONE TIME)

A. Network Setup – configure TCP/IP network of the laptop PC

Configure the firewall to allow the Dlink+ w/CPDLC access. This is often accomplished by allowing it as an 'exception' in the System and Security settings.

B. Windows TCP/IP Configuration

1. Open Network Connections

Note

- To open Network Connections, click **Start**, click **Control Panel**, click **Network and Internet Connections**, and then click **Network Connections**.
- You must be logged on as an administrator or a member of the Administrators group in order to complete this procedure. If your computer is connected to a network, network policy settings may also prevent you from completing this procedure.

Source for network setup information:

http://www.microsoft.com/resources/documentation/windows/xp/all/proddocs/en-us/sag_tcpip_pro_altconfig.mspx?mfr=true

2. Right-click the network connection that you want to configure, and then click **Properties**.
3. On the **General** tab (for a local area connection) or the **Networking** tab (for all other connections), click the **Internet Protocol (TCP/IP)** component, and then click **Properties**.
4. On the **General** tab, click **Obtain an IP address automatically**.
5. On the **Alternate Configuration** tab, click **User configured** and then type appropriate values for the following:
 - IP address
192.168.255.12

SERVICE BULLETIN

- Subnet mask
255.255.255.255.0
- Default gateway
192.168.1.0
- Preferred and alternate DNS server
Blank
- Preferred and alternate WINS server
Blank

- C. Copy the folder “SB - 14114-23-04 Revision -.zip” to the Windows desktop. Extract the “SB - 14114-23-04” folder and its contents to the Windows desktop, and open the folder.
- D. Double click on Spectralux-SB-14114-23-04.EXE. Click **YES** in response to the query, “Install Spectralux Service Bulletin Files.”

4. ACCOMPLISHMENT INSTRUCTIONS (EACH UNIT)

The paragraphs identified with a letter give the general work instructions and the necessary tests. Referenced figures are in section 5.

Note: There may be Windows Security Alert(s) asking if you want to keep blocking the program the first time this section is performed by a PC. Click Unblock.

Note: These instructions assume the Dlink+ w/CPDLC is properly installed in the aircraft with an RJ45 maintenance port connector available.

- A. Enable power to the Dlink+ w/CPDLC.
- B. Connect an Ethernet cable between the PC and the Maintenance Port on the aircraft.
- C. Start the Configuration Loader software on the PC
- D. Click on the **TSAP** tab (Figure 1)
- E. Find the line that has a grayed out button called “Write TSAP Database”. Click on **Browse** button to the right of that line.
- F. Locate the database file (Figure 2)
- G. Click on the **OPEN** button to select the file.
- H. Click on “Write TSAP Database” button.
- I. Wait for the Dlink+ w/CPDLC to automatically reboot. (Figure 3)
- J. Disconnect Ethernet cable.
- K. **END**

SERVICE BULLETIN

5. FIGURES

Figure 1 TSAP tab selected

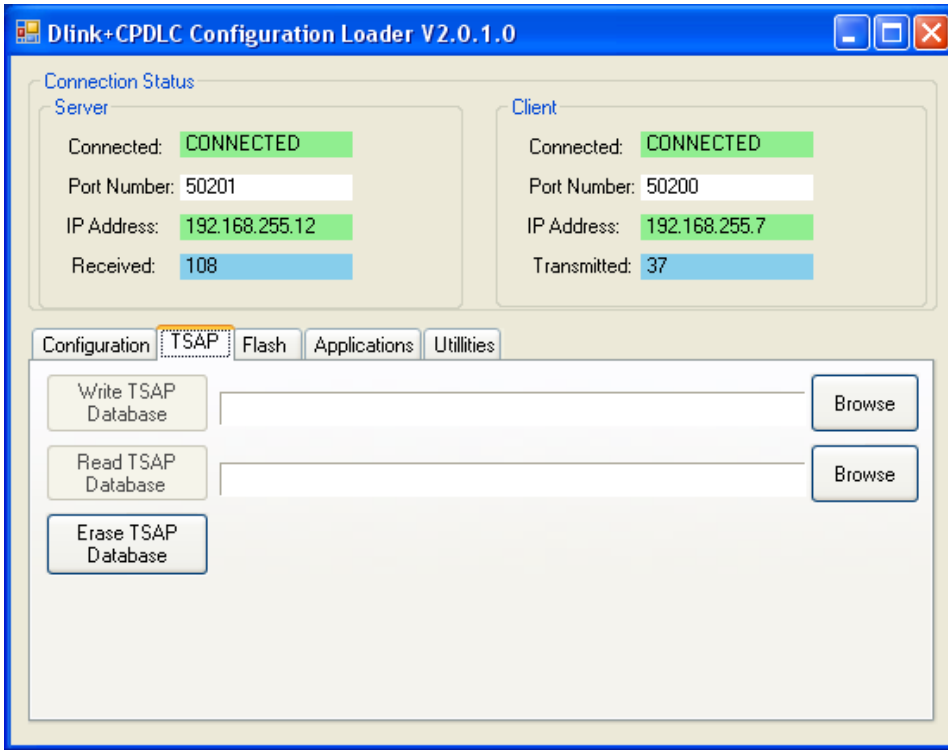
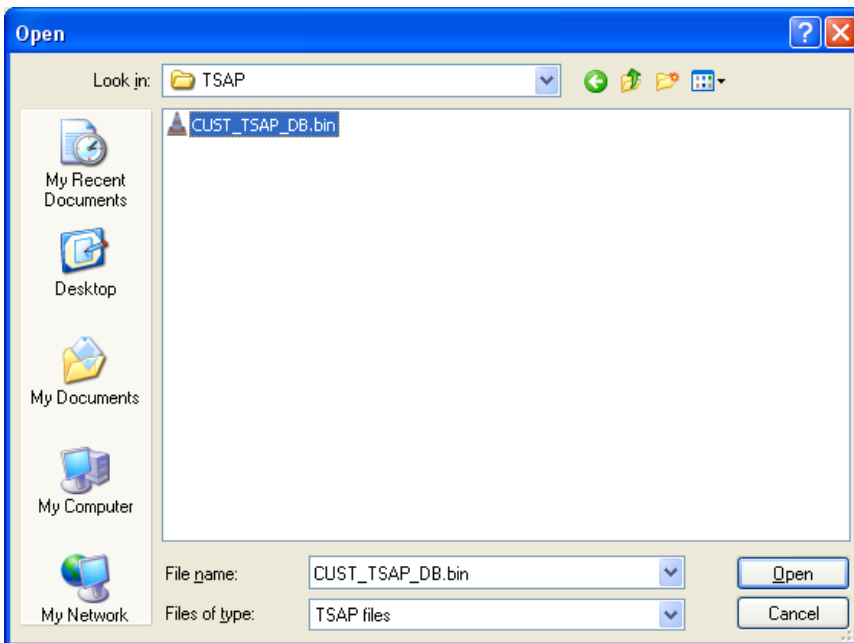
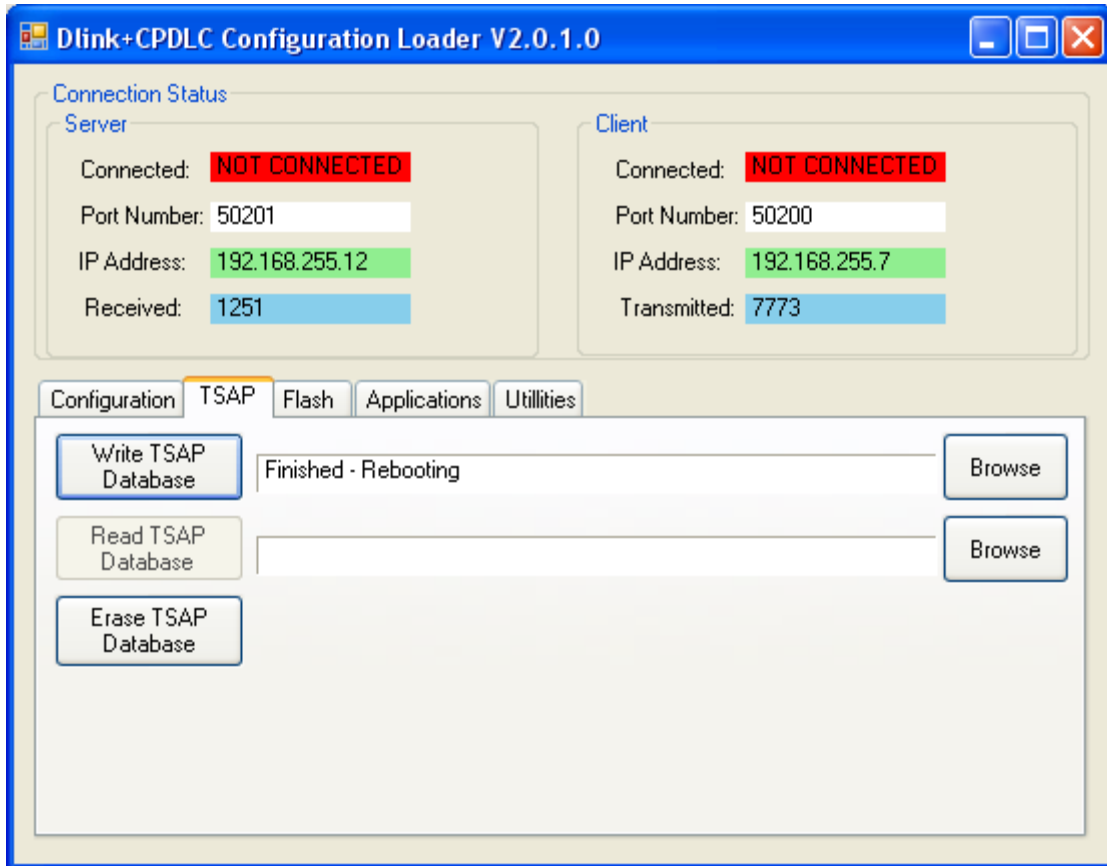


Figure 2 Selecting the TSAP database file



SERVICE BULLETIN

Figure 3 The screen appearance once the TSAP database has been written



SERVICE BULLETIN

6. APPROVAL

Prepared by: _____

Program Manager: _____

Director of Engineering: _____

Director of Quality: _____

Spectralux Corporation
12335 134th Court NE
Redmond, WA 98052
USA

Telephone: +1 425.285.3000